

#### 44-1085: Anti-Tau Monoclonal Antibody (Clone:IHC696)(Discontinued)

<b>Clonality :</b>	Monoclonal
<b>Clone Name :</b>	IHC696
<b>Application :</b>	IHC
<b>Reactivity :</b>	Human
<b>Gene :</b>	MAPT
<b>Gene ID :</b>	4137
<b>Uniprot ID :</b>	P10636
<b>Format :</b>	Purified
<b>Alternative Name :</b>	MAPT,MAPTL,MTBT1,TAU
<b>Isotype :</b>	Mouse IgG1
<b>Immunogen Information :</b>	Human Recombinant Tau (Longest Brain Isoform 441 aa)

#### Description

Tau proteins are abundant in neurons of the central nervous system, and function in microtubule stability and organization. Defects in Tau functioning and aggregation of these proteins have been clinically linked to a number of neurodegenerative disorders including Alzheimer's disease, Parkinson's disease, Pick's disease (PiD), progressive supranuclear palsy (PSP), cortical basal degeneration (CBD), and frontotemporal dementia with parkinsonism linked to chromosome 17 (FTDP-17).

#### Product Info

<b>Amount :</b>	0.1 ml / 0.5 ml
<b>Purification :</b>	Protein A/G Chromatography
<b>Content :</b>	Tris Buffer, pH 7.3 - 7.7, with 1% BSA and <0.1% Sodium Azide
<b>Storage condition :</b>	Store at 2°C - 8°C. Do not freeze.

#### Application Note

Recommended dilutions: Immunohistochemical analysis: 1:100 - 1:200. However, this need to be optimized based on the research applications.

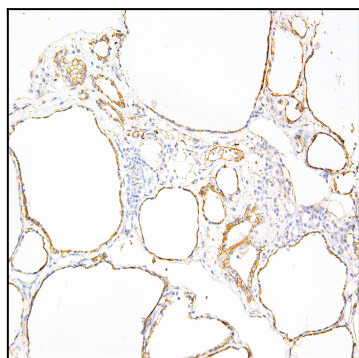


Figure 1: Immunohistochemical analysis of Tau (Clone: IHC696) on Thyroid Gland