

30-2333: PE Conjugated, Anti-5-bromodeoxyuridine (BrdU) Monoclonal Antibody (Clone:Bu20a)

Clonality :	Monoclonal
Clone Name :	Bu20a
Application :	FACS
Conjugate :	PE
Isotype :	Mouse IgG1
Immunogen Information :	Bromodeoxyuridine conjugated to BSA

Description

Bromodeoxyuridine (BrdU) is a thymidine analog which is selectively incorporated into the DNA of proliferating cells to provide a marker for the DNA being replicated. The number of proliferating cells can then be detected in cell lysates, tissue sections or suspensions using an antibody specific for the BrdU.

Product Info

Amount :	100 tests
Content :	The reagent is provided in stabilizing phosphate buffered saline (PBS) solution containing 15mM sodium azide.
Storage condition :	Store in the dark at 2-8°C. Do not freeze. Avoid prolonged exposure to light.

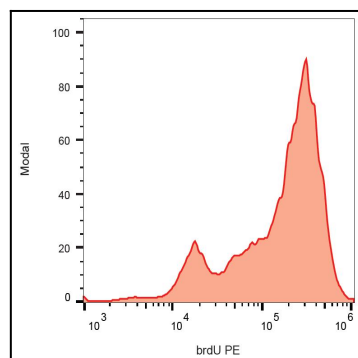


Figure 1: Intracellular staining of BrdU incorporated into the K562 cells. Stained using anti-BrdU (clone Bu20a) PE.