

### 30-1431: Anti-ABRA1 Monoclonal Antibody (Clone:ABRA1-01)

<b>Clonality :</b>	Monoclonal
<b>Clone Name :</b>	ABRA1-01
<b>Application :</b>	FACS
<b>Reactivity :</b>	Human
<b>Gene :</b>	ABRAXAS1
<b>Gene ID :</b>	84142
<b>Uniprot ID :</b>	Q6UWZ7
<b>Format :</b>	Purified
<b>Alternative Name :</b>	ABRAXAS1,ABRA1,CCDC98,FAM175A,UNQ496/PRO1013
<b>Isotype :</b>	Mouse IgG
<b>Immunogen Information :</b>	Recombinant protein corresponding to amino acids 1-313 of ABRA1 with N-terminal His6 tag

#### Description

ABRA1 (Abraxas), also known as CCDC98, is an adaptor protein that is essential for formation and function of BRCA1 A tumor suppressor complex. This complex plays critical roles in DNA repair, cell cycle checkpoint control, and maintenance of genomic stability. ABRA1 mediates interaction of ubiquitin-interacting motif-containing protein RAP80 and deubiquitination enzyme BRCC36 with BRCA1/BARD1. ABRA1 controls both DNA-damage-induced formation of BRCA1 foci and BRCA1-dependent G2/M checkpoint activation.

#### Product Info

<b>Amount :</b>	0.1 mg
<b>Purification :</b>	Purified by protein-A affinity chromatography
<b>Content :</b>	1 mg/ml; Phosphate buffered saline (PBS) with 15 mM sodium azide, approx. pH 7.4
<b>Storage condition :</b>	Store at 2-8°C. Do not freeze.

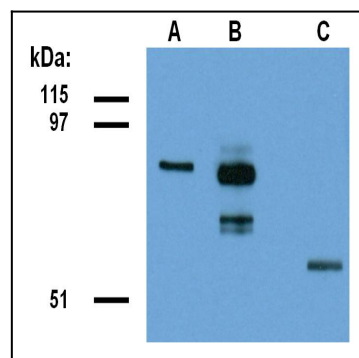


Figure 1: Detection of ABRA1-EGFP fusion protein in lysate of transfected HEK293 cells. Lane A: Immunostaining with anti-ABRA1 (clone ABRA1-01). Lane B: Immunostaining with anti-EGFP (polyclonal). Lane C: Immunostaining with anti-alpha tubulin (clone TU-01)