

## 30-1858: Biotin Conjugated, Anti-Albumin Monoclonal Antibody (Clone:AL-01)

<b>Clonality :</b>	Monoclonal
<b>Clone Name :</b>	AL-01
<b>Application :</b>	IHC
<b>Reactivity :</b>	Human
<b>Conjugate :</b>	Biotin
<b>Gene :</b>	ALB
<b>Gene ID :</b>	213
<b>Uniprot ID :</b>	P02768
<b>Alternative Name :</b>	ALB,GIG20,GIG42,PRO0903,PRO1708,PRO2044,PRO2619,PRO2675,UNQ696/PRO1341
<b>Isotype :</b>	Mouse IgG1
<b>Immunogen Information :</b>	Fraction of proteins containing albumin after ammonium sulphate precipitation and DEAE-chromatography of human serum.

### Description

Human serum albumin (65-67 kDa) is the most abundant protein in human blood plasma (produced in the liver). It has a serum half-life of approximately 20 days.

### Product Info

<b>Amount :</b>	0.1 mg
<b>Storage condition :</b>	Store at 2-8°C. Do not freeze.

### Application Note

Western blotting: Positive control: human plasma, recommended antibody dilution: 2-5 µg/ml.

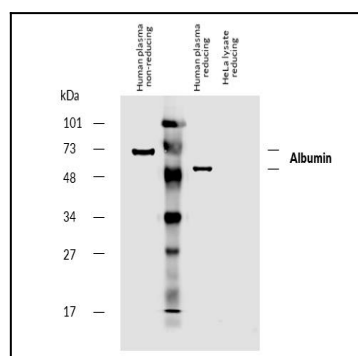


Figure-1: Western blotting analysis of human serum albumin using mouse monoclonal antibody AL-01 on human plasma and lysate of HeLa cell line (albumin non-expressing cell line; negative control) under non-reducing and reducing conditions. Nitrocellulose membrane was probed with 5 µg/ml of biotinylated mouse anti-human albumin monoclonal antibody followed by IRDye800-conjugated streptavidin. Albumin was detected at approximately 50-67 kDa.