

### 30-1521: Anti-ARHGEF4 / ASEF1 Monoclonal Antibody (Clone:ARHGEF-08)

<b>Clonality :</b>	Monoclonal
<b>Clone Name :</b>	ARHGEF-08
<b>Application :</b>	FACS, WB
<b>Reactivity :</b>	Human
<b>Gene :</b>	ARHGEF4
<b>Gene ID :</b>	50649
<b>Uniprot ID :</b>	Q9NR80
<b>Format :</b>	Purified
<b>Alternative Name :</b>	ARHGEF4,KIAA1112
<b>Isotype :</b>	Mouse IgG1
<b>Immunogen Information :</b>	Recombinant fragment of human ARHGEF4 (amino acids 143-271)

#### Description

ARHGEF4 (Rho guanine nucleotide exchange factor 4), also known as ASEF 1 (adenomatous polyposis coli - stimulated guanine nucleotide exchange factor 1) is an approximately 80 kDa cytoplasmic protein important for growth factor-mediated regulation of cell morphology and migration. Besides N-terminal adenomatous polyposis coli (APC)-binding region (ABR) it contains Dbl homology (DH), Pleckstrin homology (PH) and SH3 domains. The SH3 domain inhibits GEF activity of ARHGEF4 by intramolecular interaction with the DH domain, whereas binding of APC stimulates the GEF activity. Activated ARHGEF4 stimulates the small GTPase Cdc42, which leads to decreased cell-cell adherence and enhanced cell migration.

#### Product Info

<b>Amount :</b>	0.1 mg
<b>Purification :</b>	Purified by protein-A affinity chromatography
<b>Storage condition :</b>	Store at 2-8°C. Do not freeze.

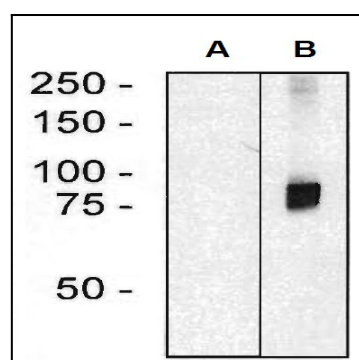


Figure 1: Western blotting analysis of ARHGEF4 in HEK293 cells (A) and HEK293-ARHGEF4 transfectants (B) using mouse monoclonal anti-ARHGEF4 (clone ARHGEF-08).