

### 30-1962: FITC Conjugated, Anti-beta2-Microglobulin Monoclonal Antibody (Clone:B2M-01)

<b>Clonality :</b>	Monoclonal
<b>Clone Name :</b>	B2M-01
<b>Application :</b>	FACS
<b>Reactivity :</b>	Human
<b>Conjugate :</b>	FITC
<b>Gene :</b>	B2M
<b>Gene ID :</b>	567
<b>Uniprot ID :</b>	P61769
<b>Alternative Name :</b>	B2M,CDABP0092,HDCMA22P
<b>Isotype :</b>	Mouse IgG2a
<b>Immunogen Information :</b>	Purified human beta2-microglobulin

#### Description

Beta2-microglobulin non-covalently associates with the 44 kDa alpha chain to forms the HLA Class I antigen complex. Human beta2-microglobulin associated with HLA Class I antigens is expressed on many types of cells including lymphocytes, thymocytes, monocytes, granulocytes, platelets, endothelial cells, and epithelial cells. It is absent on erythrocytes.

#### Product Info

<b>Amount :</b>	0.1 mg
<b>Storage condition :</b>	Store in the dark at 2-8°C. Do not freeze. Avoid prolonged exposure to light.

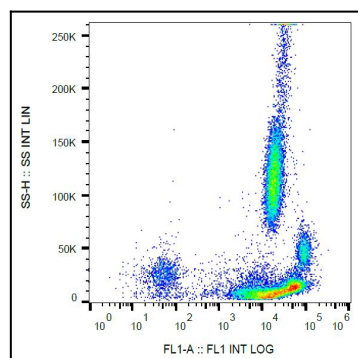


Figure 1: Surface staining of beta2-microglobulin in human peripheral blood with anti-beta2-microglobulin (B2M-01) FITC.