

30-1316: Anti-beta2-Microglobulin Monoclonal Antibody (Clone:B2M-02)

Clonality :	Monoclonal
Clone Name :	B2M-02
Application :	FACS
Reactivity :	Human
Gene :	B2M
Gene ID :	567
Uniprot ID :	P61769
Format :	Purified
Alternative Name :	B2M,CDABP0092,HDCMA22P
Isotype :	Mouse IgG1
Immunogen Information :	Purified isolated human beta2-microglobulin.

Description

Beta2-microglobulin non-covalently associates with the 44 kDa alpha chain to forms the HLA Class I antigen complex. Human beta2-microglobulin associated with HLA Class I antigens is expressed on many types of cells including lymphocytes, thymocytes, monocytes, granulocytes, platelets, endothelial cells, and epithelial cells. It is absent on erythrocytes.

Product Info

Amount :	0.1 mg
Purification :	Purified by protein-A affinity chromatography
Storage condition :	Store at 2-8°C. Do not freeze.

Application Note

Immunohistochemistry (paraffin sections): Heat-mediated antigen retrieval; recommended dilution: 5 µg/ml; positive tissue: liver.
Western blotting: Recommended dilution: 2 µg/ml; non-reducing conditions preferred.
Flow cytometry: Recommended dilution: 1 µg/ml; positive control: PBL cell line, negative control: DAUDI human lymphoma cell line, erythrocytes.
ELISA: Working dilution should be determined by investigator.

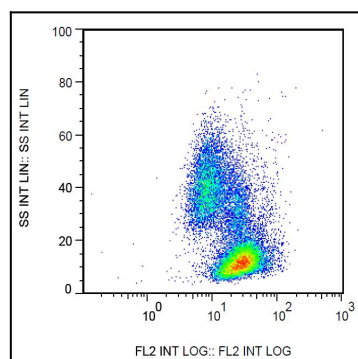


Figure 1: Surface staining of human peripheral blood cells by mouse monoclonal anti-beta2-microglobulin antibody B2M-02.