

30-1888: Biotin Conjugated, Anti-beta2-Microglobulin Monoclonal Antibody (Clone:B2M-02)

| | |
|-------------------------|--|
| Clonality : | Monoclonal |
| Clone Name : | B2M-02 |
| Application : | FACS |
| Reactivity : | Human |
| Conjugate : | Biotin |
| Gene : | B2M |
| Gene ID : | 567 |
| Uniprot ID : | P61769 |
| Alternative Name : | B2M,CDABP0092,HDCMA22P |
| Isotype : | Mouse IgG1 |
| Immunogen Information : | Purified isolated human beta2-microglobulin. |

Description

Beta2-microglobulin non-covalently associates with the 44 kDa alpha chain to form the HLA Class I antigen complex. Human beta2-microglobulin associated with HLA Class I antigens is expressed on many types of cells including lymphocytes, thymocytes, monocytes, granulocytes, platelets, endothelial cells, and epithelial cells. It is absent on erythrocytes.

Product Info

| | |
|---------------------|--------------------------------|
| Amount : | 0.1 mg |
| Storage condition : | Store at 2-8°C. Do not freeze. |

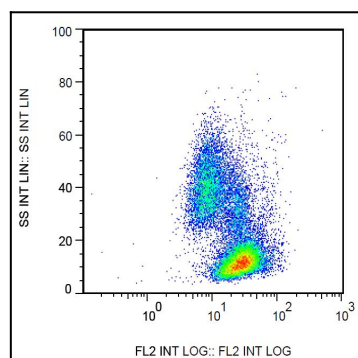


Figure 1: Surface staining of human peripheral blood cells by mouse monoclonal anti-beta2-microglobulin antibody B2M-02 biotin.