

30-1388: Anti-beta-Catenin Monoclonal Antibody (Clone:EM-22)

Clonality :	Monoclonal
Clone Name :	EM-22
Application :	FACS
Reactivity :	Human
Gene :	CTNNB1
Gene ID :	1499
Uniprot ID :	P35222
Format :	Purified
Alternative Name :	Beta-catenin, CTNNB
Isotype :	Mouse IgG1
Immunogen Information :	Recombinant human beta-catenin

Description

Beta-catenin is a multifunctional protein involved both in cell adhesion and in activation of transcription. Calcium-dependent intercellular adhesion transmembrane glycoprotein E-cadherin interacts by its cytoplasmic domain with reciprocally bound alpha, beta and gamma catenin. Beta-catenin links this complex through alpha-actinin to the cytoskeleton. Functional cadherin-catenin system is important for invasiveness of tumour cells. Beta-catenin level in cytoplasm is controlled by glycogen synthase kinase-3 beta. When activity of this kinase is blocked (e.g. by excessive stimulation of Wnt signaling pathway), hypophosphorylated stable form of beta-catenin accumulates in the cytoplasm, translocates to the nucleus and activates transcription of genes including those that are involved in cell cycle control. As a result, cell division and neoplastic transformation are promoted.

Product Info

Amount :	0.1 mg
Purification :	Purified by protein-A affinity chromatography
Storage condition :	Store at 2-8°C. Do not freeze.

Application Note

Western Blotting *Positive control:* HT29 human colon adenocarcinoma cell line, FHC human cell line, DLD1 human colon adenocarcinoma cell line

KW1 mouse cell line C57MG mouse cell line, 3T3 mouse fibroblast cell line

Immunocytochemistry *Positive control:* HT29 human colon adenocarcinoma cell line

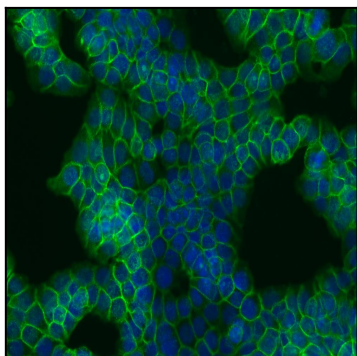


Figure 1: Immunocytochemistry staining of beta-catenin in human colon adenocarcinoma cell line HT29 using EM-22 antibody (green). Cell nuclei visualized by DAPI (blue).

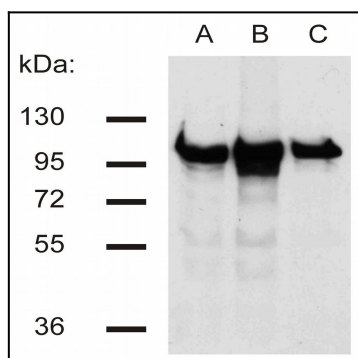


Figure 2: Western blotting analysis of beta-catenin in murine 3T3 (A), C57 (B) and KW1 (C) cell lines using EM-22 antibody.