

30-1378: Anti-Brg1 Monoclonal Antibody (Clone:BRG-01)

Clonality :	Monoclonal
Clone Name :	BRG-01
Application :	WB
Reactivity :	Human
Gene :	SMARCA4
Gene ID :	6597
Uniprot ID :	P51532
Format :	Purified
Alternative Name :	SMARCA4,BAF190A,BRG1,SNF2B,SNF2L4
Isotype :	Mouse IgG2a
Immunogen Information :	Bacterially produced GST-fused protein representing 242 C-terminal amino acids of human Brg1.

Description

Brg1 (Brahma-related gene 1) is an ATPase subunit of SWI2/SNF2-like chromatin-remodeling complexes that enable access of regulatory and effector proteins in transcription, DNA repair and DNA replication. Although Brg1-containing complexes are not essential for general cell survival, they participate in transcriptional regulation of several hundred genes including those involved in interferon and stress response, immune cells differentiation, neurogenesis, cell cycle etc. and is absolutely necessary for mouse embryogenesis. Brg1 is also involved in cell growth arrest, senescence and tumour suppression.

Product Info

Amount :	0.1 mg
Purification :	Purified by protein-A affinity chromatography
Storage condition :	Store at 2-8°C. Do not freeze.

Application Note

Western Blotting *Recommended dilution:* 10 Åµg/ml

Positive control: HEK293 cells

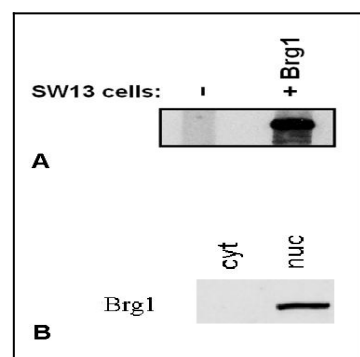


Figure 1: Immunostaining of Brg1 by BRG-01 antibody. A - Brg1-negative SW13 cells were transfected with Brg1-expression plasmid and analysed by Western blotting for Brg1 expression. B - HEK293 cytoplasmic (cyt) and nuclear (nuc) lysates were analysed by Western blotting for Brg1 presence.