

30-2000: FITC Conjugated, Anti-CD10 / CALLA Monoclonal Antibody (Clone:LT10)

| | |
|--------------------------------|---|
| Clonality : | Monoclonal |
| Clone Name : | LT10 |
| Application : | FACS |
| Reactivity : | Human |
| Conjugate : | FITC |
| Gene : | MME |
| Gene ID : | 4311 |
| Uniprot ID : | P08473 |
| Alternative Name : | MME,EPN |
| Isotype : | Mouse IgG1 |
| Immunogen Information : | mouse NALM-6 leukemia pre-B cell line (tissue/cell preparation) |

Description

CD10 (neutral endopeptidase - NEP, common acute lymphocytic leukemia antigen - CALLA, membrane metallo-endopeptidase - MME, enkephalinase) is a 100-kDa cell surface zinc metalloprotease cleaving peptide bonds on the N-terminus of hydrophobic amino acids and inactivating multiple physiologically active peptides. CD10 is expressed on various normal cell types, including lymphoid precursor cells, germinal center B lymphocytes, and some epithelial cells, and its expression level serves as a marker for diagnostics of many carcinomas. CD10 is also a differentiation antigen for early B-lymphoid progenitors in the B-cell differentiation pathway and has a key role in regulation of growth, differentiation and signal transduction of many cellular systems.

Product Info

| | |
|----------------------------|---|
| Amount : | 100 tests |
| Storage condition : | Store in the dark at 2-8°C. Do not freeze. Avoid prolonged exposure to light. |

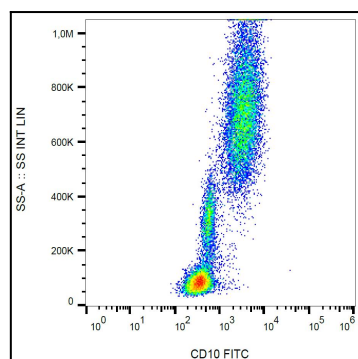


Figure 1: Surface staining of human peripheral blood cells with anti-CD10 (LT10) FITC.