

30-2160: PE Conjugated, Anti-CD10 / CALLA Monoclonal Antibody (Clone:MEM-78)

Clonality :	Monoclonal
Clone Name :	MEM-78
Application :	FACS
Reactivity :	Human
Conjugate :	PE
Gene :	MME
Gene ID :	4311
Uniprot ID :	P08473
Alternative Name :	MME,EPN
Isotype :	Mouse IgG1
Immunogen Information :	NALM-6 human pre-B cell line

Description

CD10 (neutral endopeptidase - NEP, common acute lymphocytic leukemia antigen - CALLA, membrane metallo-endopeptidase - MME, enkephalinase) is a 100-kDa cell surface zinc metalloprotease cleaving peptide bonds on the N-terminus of hydrophobic amino acids and inactivating multiple physiologically active peptides. CD10 is expressed on various normal cell types, including lymphoid precursor cells, germinal center B lymphocytes, and some epithelial cells, and its expression level serves as a marker for diagnostics of many carcinomas. CD10 is also a differentiation antigen for early B-lymphoid progenitors in the B-cell differentiation pathway and has a key role in regulation of growth, differentiation and signal transduction of many cellular systems.

Product Info

Amount :	100 tests
Storage condition :	Store in the dark at 2-8°C. Do not freeze. Avoid prolonged exposure to light.

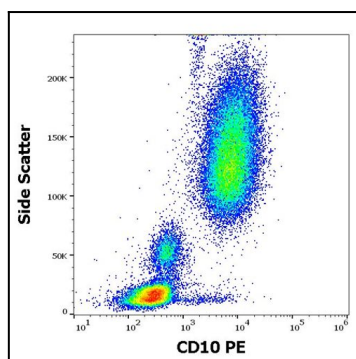


Figure 1: Flow cytometry surface staining pattern of human peripheral whole blood stained using anti-human CD10 (MEM-78) PE antibody (20 µl reagent / 100 µl of peripheral whole blood).

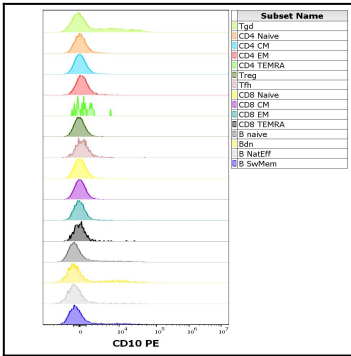


Figure 2: Expression profiling on peripheral blood subsets using Anti-human CD10 PE antibody (clone MEM-78). Adaptive panel

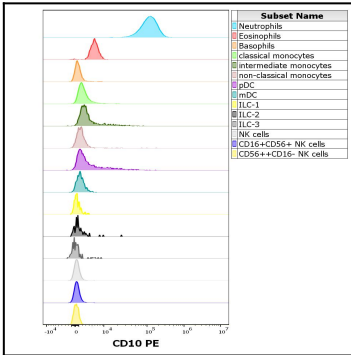


Figure 3: Expression profiling on peripheral blood subsets using Anti-human CD10 PE antibody (clone MEM-78). Innate panel

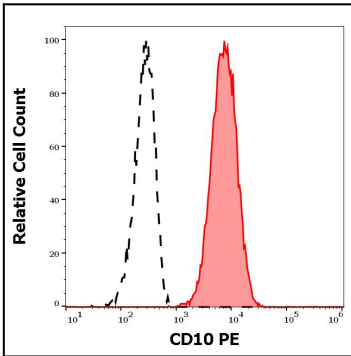


Figure 4: Separation of human neutrophil granulocytes (red-filled) from CD10 negative lymphocytes (black-dashed) in flow cytometry analysis (surface staining) of human peripheral whole blood stained using anti-human CD10 (MEM-78) PE antibody (20 µl reagent / 100 µl of peripheral whole blood).