

### 30-2228: PE Conjugated, Anti-CD10 / CALLA Monoclonal Antibody (Clone:LT10)

|                                |   |
|--------------------------------|---|
| <b>Clonality :</b>             | Monoclonal  |
| <b>Clone Name :</b>            | LT10  |
| <b>Application :</b>           | FACS  |
| <b>Reactivity :</b>            | Human   |
| <b>Conjugate :</b>             | PE  |
| <b>Gene :</b>                  | MME   |
| <b>Gene ID :</b>               | 4311  |
| <b>Uniprot ID :</b>            | P08473  |
| <b>Alternative Name :</b>      | MME,EPN   |
| <b>Isotype :</b>               | Mouse IgG1  |
| <b>Immunogen Information :</b> | mouse NALM-6 leukemia pre-B cell line (tissue/cell preparation) |

#### Description

CD10 (neutral endopeptidase - NEP, common acute lymphocytic leukemia antigen - CALLA, membrane metallo-endopeptidase - MME, enkephalinase) is a 100-kDa cell surface zinc metalloprotease cleaving peptide bonds on the N-terminus of hydrophobic amino acids and inactivating multiple physiologically active peptides. CD10 is expressed on various normal cell types, including lymphoid precursor cells, germinal center B lymphocytes, and some epithelial cells, and its expression level serves as a marker for diagnostics of many carcinomas. CD10 is also a differentiation antigen for early B-lymphoid progenitors in the B-cell differentiation pathway and has a key role in regulation of growth, differentiation and signal transduction of many cellular systems.

#### Product Info

|                            |   |
|----------------------------|---|
| <b>Amount :</b>            | 100 tests   |
| <b>Storage condition :</b> | Store in the dark at 2-8°C. Do not freeze. Avoid prolonged exposure to light. |

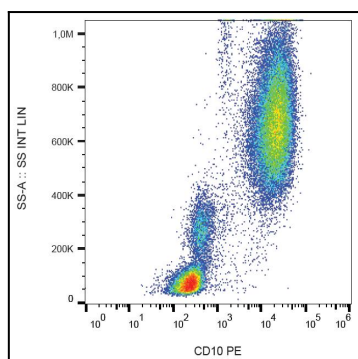


Figure 1: Surface staining of human peripheral blood cells with anti-CD10 (LT10) PE.