

30-1976: FITC Conjugated, Anti-CD105 / Endoglin Monoclonal Antibody (Clone:MEM-226)

Clonality :	Monoclonal
Clone Name :	MEM-226
Application :	FACS
Reactivity :	Rat,Human
Conjugate :	FITC
Gene :	ENG
Gene ID :	2022
Uniprot ID :	P17813
Alternative Name :	ENG,END
Isotype :	Mouse IgG2a
Immunogen Information :	Recombinant <i>Vaccinia</i> virus containing the human CD105 cDNA.

Description

CD105 (Endoglin) is a homodimeric transmembrane glycoprotein serving in presence of TGFbetaR-2 as a receptor for TGFbeta-1 and TGFbeta-3. CD105 is highly expressed on endothelial cells and promotes angiogenesis during wound healing, infarcts and in a wide range of tumours and its gene expression is stimulated by hypoxia. CD105 prevents apoptosis in hypoxic endothelial cells and also antagonises the inhibitory effects of TGFbeta-1 on vascular endothelial cell growth and migration. Normal cellular levels of CD105 are required for formation of new blood vessels.

Product Info

Amount :	100 tests
Content :	Stabilizing phosphate buffered saline (PBS), pH 7.4, 15 mM sodium azide
Storage condition :	Store in the dark at 2-8°C. Do not freeze. Avoid prolonged exposure to light.

Application Note

Flow cytometry: The reagent is designed for analysis of human blood cells using 20 µl reagent / 100 µl of whole blood or 10⁶ cells in a suspension. The content of a vial (2 ml) is sufficient for 100 tests.

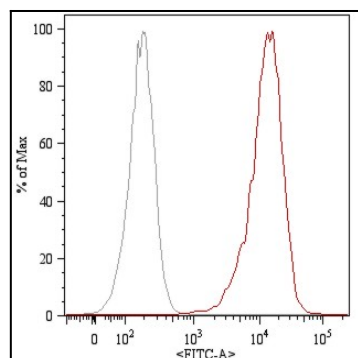


Figure 1: Surface staining (flow cytometry) of HUVEC (human umbilical vein endothelial cells) with anti-human CD105 (MEM-226) FITC. Total viable cells were used for analysis.