

### 30-2131: PE Conjugated, Anti-CD114 / G-CSFR Monoclonal Antibody (Clone:LMM741)

<b>Clonality :</b>	Monoclonal
<b>Clone Name :</b>	LMM741
<b>Application :</b>	FACS
<b>Reactivity :</b>	Human
<b>Conjugate :</b>	PE
<b>Gene :</b>	CSF3R
<b>Gene ID :</b>	1441
<b>Uniprot ID :</b>	Q99062
<b>Alternative Name :</b>	CSF3R,GCSFR
<b>Isotype :</b>	Mouse IgG1
<b>Immunogen Information :</b>	CHO cells transfected with human CD114

#### Description

CD114 / G-CSFR (granulocyte colony-stimulating factor receptor, also known as CSF3R) is a type I transmembrane glycoprotein which upon binding of its ligand (G-CSF, granulocyte colony-stimulating factor) homodimerizes and activates signaling transduction to mediate cell proliferation, survival, and differentiation. It is expressed by granulocytes at all stages of their differentiation, as well as by monocytes, dendritic cells, and mature platelets. Among non-hematopoietic cells, it is expressed e.g. by endothelial cells, placenta, trophoblasts, and many tumor cell lines. This antigen is a target for stem cell mobilization for blood stem cell transplantation, for enhancing recovery of myelopoiesis following chemotherapy and in the treatment of patients with severe chronic neutropenia.

#### Product Info

<b>Amount :</b>	100 tests
<b>Content :</b>	Stabilizing phosphate buffered saline (PBS), pH 7.4, 15 mM sodium azide
<b>Storage condition :</b>	Store at 2-8°C. Protect from prolonged exposure to light. Do not freeze.

#### Application Note

Flow cytometry: The reagent is designed for analysis of human blood cells using 10 µl reagent / 100 µl of whole blood or 10<sup>6</sup> cells in a suspension. The content of a vial (1 ml) is sufficient for 100 tests.

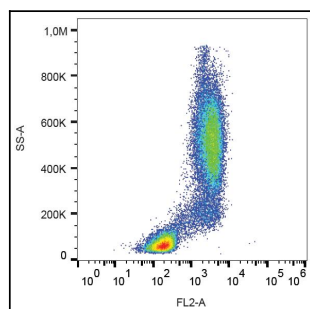


Figure 1: Surface staining of CD114 in human peripheral blood with anti-CD114 (LMM741) PE.