

### 30-1549: Anti-CD116 Monoclonal Antibody (Clone:4H1)

<b>Clonality :</b>	Monoclonal
<b>Clone Name :</b>	4H1
<b>Application :</b>	FACS
<b>Reactivity :</b>	Human
<b>Gene :</b>	CSF2RA
<b>Gene ID :</b>	1438
<b>Uniprot ID :</b>	P15509
<b>Format :</b>	Purified
<b>Alternative Name :</b>	CSF2RA,CSF2R,CSF2RY
<b>Isotype :</b>	Mouse IgG1
<b>Immunogen Information :</b>	CD116-transfected COS cells

#### Description

CD116 (GM-CSF R alpha) is the low affinity receptor for granulocyte-macrophage colony-stimulating factor (GM-CSF). CD116 heterodimerizes with CD131, the common beta chain subunit shared with IL-3 and IL5 receptors, to form the high affinity GM-CSF receptor. CD116 is expressed by myeloid cells including macrophages, neutrophils, eosinophils, dendritic cells, and their precursors, as well as on endothelial cells. It is being used as a specific marker of myeloid leukemias.

#### Product Info

<b>Amount :</b>	0.1 mg
<b>Purification :</b>	Purified by protein-A affinity chromatography
<b>Storage condition :</b>	Store at 2-8°C. Do not freeze.

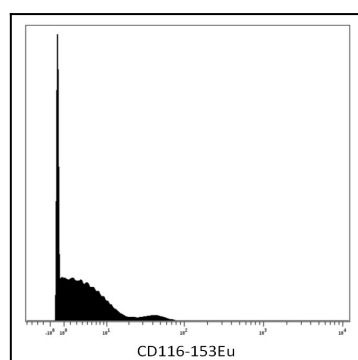


Figure 1: Surface staining (mass cytometry) of human peripheral blood with anti-CD116 (4H1) 153Eu. Gated on singlets.