

30-2055: FITC Conjugated, Anti-CD11a / LFA-1 alpha chain Monoclonal Antibody (Clone:M17/4)

Clonality :	Monoclonal
Clone Name :	M17/4
Application :	FACS
Reactivity :	Mouse
Conjugate :	FITC
Gene :	Itgal
Gene ID :	16408
Uniprot ID :	P24063
Alternative Name :	Itgal,Lfa-1,Ly-15
Isotype :	Rat IgG2a
Immunogen Information :	C57BL/6 mouse splenic secondary cytotoxic T lymphocytes

Description

CD11a (LFA-1 alpha) together with CD18 constitute leukocyte function-associated antigen 1 (LFA-1), the alphaLbeta2 integrin. CD11a is implicated in activation of LFA-1 complex. LFA-1 is expressed on the plasma membrane of leukocytes in a low-affinity conformation. Cell stimulation by chemokines or other signals leads to induction the high-affinity conformation, which supports tight binding of LFA-1 to its ligands, the intercellular adhesion molecules ICAM-1, -2, -3. LFA-1 is thus involved in interaction of various immune cells and in their tissue-specific settlement, but participates also in control of cell differentiation and proliferation and of T-cell effector functions.

Product Info

Amount :	0.1 mg
Storage condition :	Store in the dark at 2-8°C. Do not freeze. Avoid prolonged exposure to light.

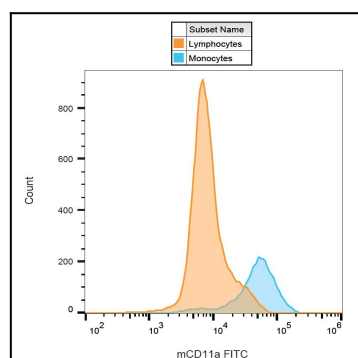


Figure 1: Surface staining of murine monocytes using anti-CD11a monoclonal antibody (clone M17/4) FITC.