

30-2092: Anti-CD11b Monoclonal Antibody (Clone:ICRF44)-FITC Conjugated

Clonality :	Monoclonal
Clone Name :	ICRF44
Application :	FACS, IP, IHC-Fr, ICC, Functional Assay
Reactivity :	Human, Non-Human Primates
Conjugate :	FITC
Gene :	ITGAM
Gene ID :	3684
Uniprot ID :	P11215
Alternative Name :	ITGAM,CD11B,CR3A
Isotype :	Mouse IgG1
Immunogen Information :	Rheumatoid synovial cells and human monocytes.

Description

CD11b (integrin alphaM subunit) is a 165-170 kDa type I transmembrane glycoprotein that non-covalently associates with integrin beta2 subunit (CD18); expression of the CD11b chain on the cell surface requires the presence of the CD18 antigen. CD11b/CD18 integrin (Mac-1, CR3) is highly expressed on NK cells, neutrophils, monocytes and less on macrophages. CD11b/CD18 integrin is implicated in various adhesive interactions of monocytes, macrophages and granulocytes, facilitating their diapedesis, as well as it mediates the uptake of complement coated particles, serving as a receptor for the iC3b fragment of the third complement component.

Product Info

Amount :	100 tests
Storage condition :	Store in the dark at 2-8°C. Do not freeze. Avoid prolonged exposure to light.

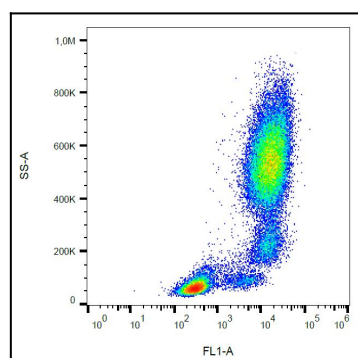


Figure 1: Surface staining of human peripheral blood with anti-CD11b (ICRF44) FITC.