

30-2141: Anti-CD11b activation epitope Monoclonal Antibody (Clone:CBRM1/5)-PE Conjugated

Clonality :	Monoclonal
Clone Name :	CBRM1/5
Application :	FACS
Reactivity :	Human
Conjugate :	PE
Isotype :	Mouse IgG1
Immunogen Information :	Information not available

Description

CD11b (integrin alphaM subunit) is a 165-170 kDa type I transmembrane glycoprotein that non-covalently associates with integrin beta2 subunit (CD18); expression of the CD11b chain on the cell surface requires the presence of the CD18 antigen. CD11b/CD18 integrin (Mac-1, CR3) is highly expressed on NK cells, neutrophils, monocytes and less on macrophages. CD11b/CD18 integrin is implicated in various adhesive interactions of monocytes, macrophages and granulocytes, facilitating their diapedesis, as well as it mediates the uptake of complement coated particles, serving as a receptor for the iC3b fragment of the third complement component.

Product Info

Amount :	100 tests
Storage condition :	Store in the dark at 2-8°C. Do not freeze. Avoid prolonged exposure to light.

Application Note

Flow cytometry: The reagent is designed for analysis of human blood cells using 10 µl reagent / 100 µl of whole blood or 10⁶ cells in a suspension. The content of a vial (1 ml) is sufficient for 100 tests.

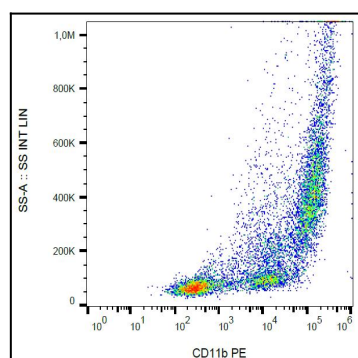


Figure 1: Surface staining of PMA-activated human peripheral blood cells with anti-human CD11b activation epitope (CBRM1/5) PE.