

## 30-2458: Anti-CD138 / Syndecan 1 Monoclonal Antibody (Clone:MI15)-PerCP Conjugated(Discontinued)

<b>Clonality :</b>	Monoclonal
<b>Clone Name :</b>	MI15
<b>Application :</b>	FACS, IP, WB, IHC
<b>Reactivity :</b>	Human, Non-Human Primates, Rat
<b>Conjugate :</b>	PerCP
<b>Gene :</b>	SDC1
<b>Gene ID :</b>	6382
<b>Uniprot ID :</b>	P18827
<b>Alternative Name :</b>	SDC1,SDC
<b>Isotype :</b>	Mouse IgG1
<b>Immunogen Information :</b>	A mixture of U266 and XG-1 human myeloma cell lines

### Description

CD138 (syndecan 1) is a transmembrane proteoglycan that can bind a variety of cytokines and modulate their activity, as well as the activity of extracellular matrix components and influence many developmental processes. CD138 is expressed mainly in differentiating keratinocytes and is transiently upregulated in all layers of the epidermis upon tissue injury. It is also highly expressed on plasma cells and can be detected even on fibroblasts, vascular smooth muscle cells and endothelial cells. Up-regulation and down-regulation of CD138 on the cell surface often correlates with the gain of cancerous characteristics. Serum levels of the shedded soluble sCD138 are used as a prognostic factor of cancerogenesis.

### Product Info

<b>Amount :</b>	100 tests
<b>Storage condition :</b>	Store in the dark at 2-8°C. Do not freeze. Avoid prolonged exposure to light.

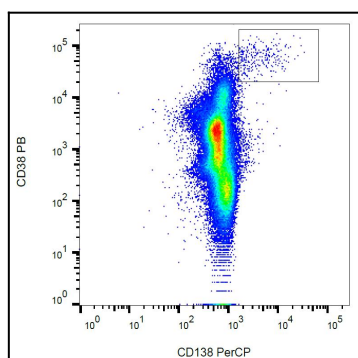


Figure 1: Surface staining of human peripheral blood with anti-human CD138 (MI15) PerCP.