

30-1182: Anti-CD14 / LPS-receptor Monoclonal Antibody (Clone:MEM-15)

Clonality :	Monoclonal
Clone Name :	MEM-15
Application :	FACS
Reactivity :	Human
Gene :	CD14
Gene ID :	929
Uniprot ID :	P08571
Format :	Purified
Alternative Name :	CD14
Isotype :	Mouse IgG1 kappa
Immunogen Information :	A crude mixture of human urinary proteins precipitated by ammonium sulphate from the urine of a patient suffering from proteinuria.

Description

CD14 is a 55 kDa GPI-anchored glycoprotein, constitutively expressed on the surface of mature monocytes, macrophages, and neutrophils, where serves as a multifunctional lipopolysaccharide receptor; it is also released to the serum both as a secreted and enzymatically cleaved GPI-anchored form. CD14 binds lipopolysaccharide molecule in a reaction catalyzed by lipopolysaccharide-binding protein (LBP), an acute phase serum protein. The soluble sCD14 is able to discriminate slight structural differences between lipopolysaccharides and is important for neutralization of serum allochthonous lipopolysaccharides by reconstituted lipoprotein particles. CD14 affects allergic, inflammatory and infectious processes.

Product Info

Amount :	0.1 mg
Purification :	Purified by protein-A affinity chromatography
Storage condition :	Store at 2-8°C. Do not freeze.

Application Note

Flow Cytometry Recommended dilution: 4 µg/ml

Immunoprecipitation excellent for immunoprecipitation of CD14

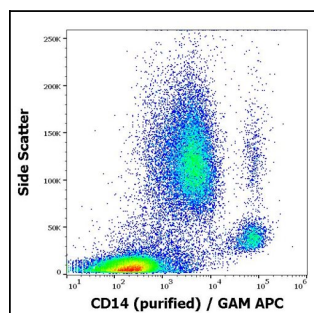


Figure 1: Flow cytometry surface staining pattern of human peripheral whole blood stained using anti-human CD14 (MEM-15) purified antibody

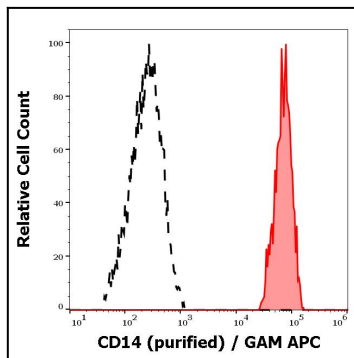


Figure 2: Separation of human monocytes (red-filled) from CD14 negative lymphocytes (black-dashed) in flow cytometry analysis (surface staining) of peripheral whole blood stained using anti-human CD14 (MEM-15) purified antibody