

30-1566: Anti-CD146 Monoclonal Antibody (Clone:P1H12)

Clonality :	Monoclonal
Clone Name :	P1H12
Application :	ICC/IF,IHC,FACS,WB
Reactivity :	Dog,Mouse,Human,Rabbit
Conjugate :	Unconjugated
Gene :	MCAM
Gene ID :	4162
Uniprot ID :	P43121
Format :	Purified
Alternative Name :	MCAM,MUC18
Isotype :	Mouse IgG1
Immunogen Information :	cultured human umbilical cells

Description

CD146, also known as MCAM (melanoma cell adhesion molecule) or MUC18, is a heavily glycosylated transmembrane glycoprotein with more than 50% of the mass from carbohydrates. It is expressed on epithelial and endothelial cells, fibroblasts, multipotent mesenchymal stromal cells, activated T cells and activated keratinocytes, and on some cancer cells, especially melanoma. The presence of CD146 on circulating blood cells has been confined to the activated T cells rather than circulating endothelial cells. CD146 mediates heterophilic cell adhesion and regulates monocyte transendothelial migration.

Product Info

Amount :	0.1 mg
Purification :	Purified by protein-A affinity chromatography
Content :	Stabilizing phosphate buffered saline (PBS), pH 7.4, 15 mM sodium azide
Storage condition :	Store at 2-8°C. Do not freeze.

Application Note

Flow Cytometry Immunoprecipitation Western Blotting *Application note:* nonreducing conditions
Immunohistochemistry Immunohistochemistry (frozen sections) Immunocytochemistry

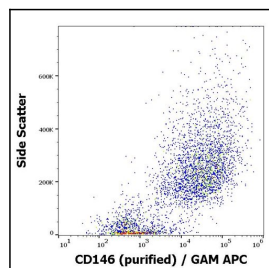


Figure 1: Flow cytometry surface staining of HUVEC cells using anti- h CD146 purified antibody