

30-1943: Anti-CD15 / Lewis x Blood Group antigen Monoclonal Antibody (Clone:MEM-158)-FITC Conjugated

Clonality :	Monoclonal
Clone Name :	MEM-158
Application :	FACS, IP
Reactivity :	Human
Conjugate :	FITC
Isotype :	Mouse IgM
Immunogen Information :	Human granulocytes

Description

CD15 (Lewis X, Le(x); stage specific embryonic antigen-1, SSEA-1) is a trisaccharide determinant (3-fucosyl-N-acetylglucosamine) expressed on several glycolipids, glycoproteins and proteoglycans of various cell types, e.g. granulocytes, mast cells, monocytes, macrophages, cells of gastric mucosa, nervous system or various tumour cells. There are several variants of Lewis x, such as sialyl-Lewis x or sulphated Lewis x. Cells with high surface expression of Le(x) antigen exhibit strong self-aggregation, based on calcium-dependent Le(x)-Le(x) interaction. This process is involved for example in embryo compaction or in autoaggregation of teratocarcinoma cells. Sialyl-Le(x) and its isomer sialyl-Le(a) are ligands of selectins. CD15 expression has been extensively used to confirm diagnosis of Hodgkin's disease.

Product Info

Amount :	100 tests
Storage condition :	Store in the dark at 2-8°C. Do not freeze. Avoid prolonged exposure to light.

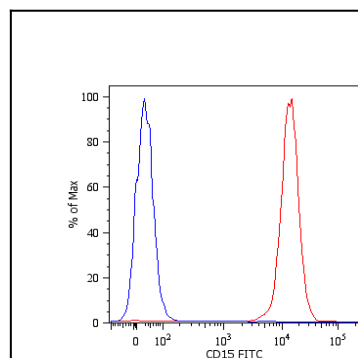


Figure 1: Surface staining (flow cytometry) of human peripheral blood cells with anti-human CD15 (MEM-158) FITC. Cells in the granulocyte gate were used for analysis.