

30-2313: Anti-CD150 Monoclonal Antibody (Clone:SLAM.4)-PE Conjugated

Clonality :	Monoclonal
Clone Name :	SLAM.4
Application :	FACS, IP, ICC
Reactivity :	Human
Conjugate :	PE
Gene :	SLAMF1
Gene ID :	6504
Uniprot ID :	Q13291
Alternative Name :	CDw150, IPO-3, SLAM family member 1, SLAMF1, SLAM
Isotype :	Mouse IgG1
Immunogen Information :	Human CD150-transfected 300.19 cells

Description

CD150, also known as SLAM (signaling lymphocyte activation molecule) is a 70-95 kDa single chain transmembrane phosphoglycoprotein of the CD2 family. Its extracellular part contains eight potential N-glycosylation sites, and the intracellular tail contains three unique tyrosine-based motifs. These binding sites can be recognized by SH2-binding phosphatases and the adaptor proteins, such as SAP/SH2D1A or EAT-2. The SLAM family receptors are involved in leucocyte activation and contribute to the effective germinal center formation, generation of high-affinity antibody-secreting plasma cells, and memory T and B cells, thereby facilitating long-term immune response. CD150 expression is upregulated after cell activation.

Product Info

Amount :	100 tests
Storage condition :	Store in the dark at 2-8°C. Do not freeze. Avoid prolonged exposure to light.

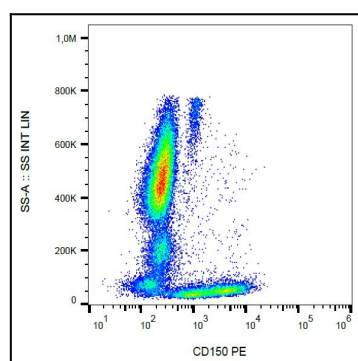


Figure 1: Surface staining of CD150 in human peripheral blood with anti-CD150 (SLAM.4) PE.