

### 30-2107: Anti-CD154 / CD40L Monoclonal Antibody (Clone:24-31)-FITC Conjugated

<b>Clonality :</b>	Monoclonal
<b>Clone Name :</b>	24-31
<b>Application :</b>	FACS, ICC, Functional Assay
<b>Reactivity :</b>	Human, Non-Human Primates
<b>Conjugate :</b>	FITC
<b>Gene :</b>	CD40LG
<b>Gene ID :</b>	959
<b>Uniprot ID :</b>	P29965
<b>Alternative Name :</b>	CD40LG,CD40L,TNFSF5,TRAP
<b>Isotype :</b>	Mouse IgG1
<b>Immunogen Information :</b>	human CD154 fusion protein

#### Description

CD154 / CD40L (CD40 ligand) is a member of the tumor necrosis factor family, and is expressed primarily on activated CD4+ lymphocytes, but also on mast cells, basophils, eosinophils and human dendritic cells. Its counter-receptor CD40 is expressed on antigen presenting cells, including dendritic cells, macrophages, and B cells, and also on fibroblasts. Triggering of CD40 by CD40L causes maturation of dendritic cells and upregulation of antigen presentation in functions of the MHC and costimulatory molecules. CD40L also functions as a direct stimulating factor for T cells. CD40L plays also roles e.g. in antibody class switching and modulation of apoptosis in the germinal center.

#### Product Info

<b>Amount :</b>	100 tests
<b>Storage condition :</b>	Store in the dark at 2-8°C. Do not freeze. Avoid prolonged exposure to light.

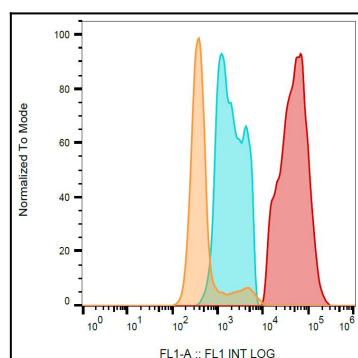


Figure 1: Flow cytometry detection of CD154 / CD40L in IgE-activated human peripheral blood with anti-CD154 / CD40L (24-31) FITC. Orange = blank, blue = CD154 negative cells, red = CD154 positive cells.