

30-2388: Anti-CD158a/g/h Monoclonal Antibody (Clone:HP-MA4)-PE Conjugated

Clonality :	Monoclonal
Clone Name :	HP-MA4
Application :	FACS, IP
Reactivity :	Human
Conjugate :	PE
Gene :	KIR2DL1
Gene ID :	3802
Uniprot ID :	P43626
Alternative Name :	KIR2DL1,CD158A,NKAT1
Isotype :	Mouse IgG2b
Immunogen Information :	Human NK cell line LB2

Description

Killer cell immunoglobulin-like receptors (KIRs) are polymorphic transmembrane glycoproteins expressed by natural killer cells and subsets of T cells. They are classified by the number of extracellular immunoglobulin domains (2D or 3D) and by whether they have a long (L) or short (S) cytoplasmic domain. KIR proteins with the long cytoplasmic domain (such as CD158a / KIR2DL1) transduce inhibitory signals upon ligand binding via an immune tyrosine-based inhibitory motif (ITIM), while KIR proteins with the short cytoplasmic domain (such as CD158g / KIR2DS5, CD158h / KIR2DS1, or KIR2DS3) lack the ITIM motif and instead associate with the TYRO protein tyrosine kinase binding protein to transduce activating signals. The ligands for CD158 isoforms are subsets of MHC class I molecules.

Product Info

Amount :	100 tests
Storage condition :	Store in the dark at 2-8°C. Do not freeze. Avoid prolonged exposure to light.

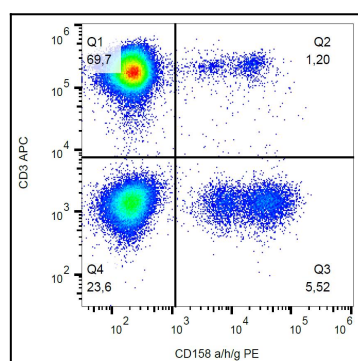


Figure 1: Surface staining of human peripheral blood with anti-CD158a/g/h (HP-MA4) PE.