

### 30-1540: Anti-CD160 Monoclonal Antibody (Clone:BY55)

<b>Clonality :</b>	Monoclonal
<b>Clone Name :</b>	BY55
<b>Application :</b>	IHC,FACS
<b>Reactivity :</b>	Human
<b>Gene :</b>	CD160
<b>Gene ID :</b>	11126
<b>Uniprot ID :</b>	O95971
<b>Format :</b>	Purified
<b>Alternative Name :</b>	CD160,BY55
<b>Isotype :</b>	Mouse IgM
<b>Immunogen Information :</b>	Human NK cell line YT2C2

#### Description

CD160 is a cell surface glycoprotein of immunoglobulin superfamily, which functions as a costimulatory receptor expressed mainly on cytotoxic cell populations and recognizing both classical and non-classical MHC class I molecules. It can form disulfide-linked multimers. Down-modulation of CD160 occurs as a consequence of its proteolytic cleavage and the released soluble form was found to impair the MHC-class I specific cytotoxicity of CD8+ T lymphocytes and NK cells. In contrast to GPI-anchored isoform with broader expression among CD160 positive cells, expression of the transmembrane isoform is restricted to NK cells and is activation-dependent.

#### Product Info

<b>Amount :</b>	0.1 mg
<b>Purification :</b>	Purified by precipitation and chromatography
<b>Content :</b>	1mg/ml,Tris buffered saline (TBS), pH 8.0, 15 mM sodium azide
<b>Storage condition :</b>	Store at 2-8°C. Do not freeze.

#### Application Note

Flow cytometry: Recommended dilution: 1-4 µg/ml.

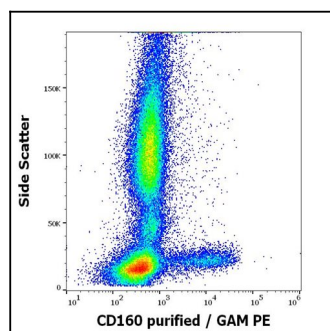


Figure 1: Flow cytometry surface staining pattern of human peripheral whole blood stained using anti-human CD160 purified antibody