

30-2370: Anti-CD160 Monoclonal Antibody (Clone:BY55)-PE Conjugated

| | |
|--------------------------------|--------------------------|
| Clonality : | Monoclonal |
| Clone Name : | BY55 |
| Application : | FACS |
| Reactivity : | Human |
| Conjugate : | PE |
| Gene : | CD160 |
| Gene ID : | 11126 |
| Uniprot ID : | O95971 |
| Alternative Name : | CD160,BY55 |
| Isotype : | Mouse IgM,kappa |
| Immunogen Information : | Human NK cell line YT2C2 |

Description

CD160 is a cell surface glycoprotein of immunoglobulin superfamily, which functions as a costimulatory receptor expressed mainly on cytotoxic cell populations and recognizing both classical and non-classical MHC class I molecules. It can form disulfide-linked multimers. Down-modulation of CD160 occurs as a consequence of its proteolytic cleavage and the released soluble form was found to impair the MHC-class I specific cytotoxicity of CD8+ T lymphocytes and NK cells. In contrast to GPI-anchored isoform with broader expression among CD160 positive cells, expression of the transmembrane isoform is restricted to NK cells and is activation-dependent.

Product Info

| | |
|----------------------------|-------------------------------------------------------------------------------|
| Amount : | 100 tests |
| Content : | Stabilizing phosphate buffered saline (PBS), pH 7.4, 15 mM sodium azide |
| Storage condition : | Store in the dark at 2-8°C. Do not freeze. Avoid prolonged exposure to light. |

Application Note

Flow cytometry: The reagent is designed for analysis of human blood cells using 10 µl reagent / 100 µl of whole blood or 10⁶ cells in a suspension. The content of a vial (1 ml) is sufficient for 100 tests.

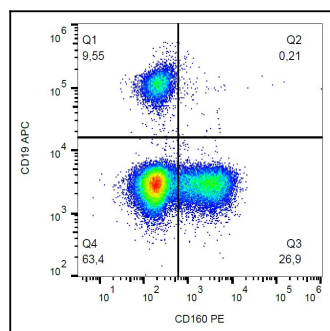


Figure 1: Surface staining of human peripheral blood cells with anti-CD160 (BY55) PE.