

30-1814: Anti-CD161 Monoclonal Antibody (Clone:HP-3G10)-APC Conjugated

Clonality :	Monoclonal
Clone Name :	HP-3G10
Application :	FACS, WB
Reactivity :	Human, Non-Human Primates
Conjugate :	APC
Gene :	KLRB1
Gene ID :	3820
Uniprot ID :	Q12918
Alternative Name :	KLRB1,CLEC5B,NKRP1A
Isotype :	Mouse IgG1
Immunogen Information :	human NK cells

Description

CD161, also known as Nkrp1 (natural killer receptor protein 1) or Klrb1 (killer cell lectin-like receptor subfamily b member 1), is a disulphide-linked homodimeric receptor, which is involved in regulation of NK cell and NKT cell function. It is expressed on a majority of NK cells, NKT cells, and e.g. Th17 cells and CD3+ thymocytes. Although rat CD161 has three isoforms (a, b, c), the human CD161 is expressed as one isoform.

Product Info

Amount :	100 tests
Storage condition :	Store in the dark at 2-8°C. Do not freeze. Avoid prolonged exposure to light.

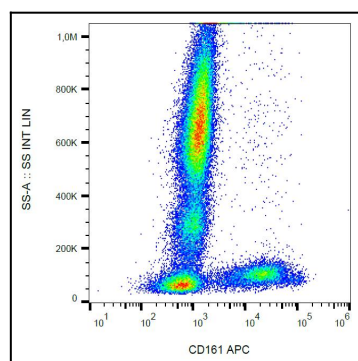


Figure 1: Surface staining of human peripheral blood cells using anti-CD161 (HP-3G10) APC.