

### 30-2360: Anti-CD161 Monoclonal Antibody (Clone:HP-3G10)-PE Conjugated

<b>Clonality :</b>	Monoclonal
<b>Clone Name :</b>	HP-3G10
<b>Application :</b>	FACS, WB
<b>Reactivity :</b>	Human, Non-Human Primates
<b>Conjugate :</b>	PE
<b>Gene :</b>	KLRB1
<b>Gene ID :</b>	3820
<b>Uniprot ID :</b>	Q12918
<b>Alternative Name :</b>	KLRB1,CLEC5B,NKRP1A
<b>Isotype :</b>	Mouse IgG1
<b>Immunogen Information :</b>	human NK cells

#### Description

CD161, also known as Nkrp1 (natural killer receptor protein 1) or Klrb1 (killer cell lectin-like receptor subfamily b member 1), is a disulphide-linked homodimeric receptor, which is involved in regulation of NK cell and NKT cell function. It is expressed on a majority of NK cells, NKT cells, and e.g. Th17 cells and CD3+ thymocytes. Although rat CD161 has three isoforms (a, b, c), the human CD161 is expressed as one isoform.

#### Product Info

<b>Amount :</b>	100 tests
<b>Storage condition :</b>	Store in the dark at 2-8°C. Do not freeze. Avoid prolonged exposure to light.

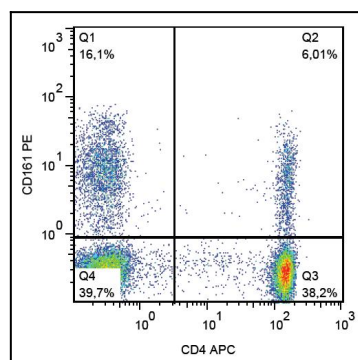


Figure 1: Surface staining of human peripheral blood cells using anti-CD161 (HP-3G10) PE.