

30-1423: Anti-CD162 / PSGL-1 Monoclonal Antibody (Clone:TC2)

Clonality :	Monoclonal
Clone Name :	TC2
Application :	FACS
Reactivity :	Human
Gene :	SELPLG
Gene ID :	6404
Uniprot ID :	Q14242
Format :	Purified
Alternative Name :	SELPLG
Isotype :	Mouse IgG1
Immunogen Information :	Human thymocytes

Description

CD162 (P-selectin glycoprotein ligand-1, PSGL-1) is a sialomucin constitutively expressed as a disulfide-linked homodimer of two 120 kDa subunits on the surface of circulating leukocytes. CD162 serves as a ligand for P- E- and L-selectin, with the highest affinity for P-selectin. It is thus involved in leukocyte rolling at the endothelial surfaces, prerequisite for firm leukocyte adhesion and subsequent transendothelial migration. CD162 also mediates leukocyte-platelet adhesion and interleukocyte contacts. Whereas serving as an adhesion molecule on mature leukocytes, CD162 is a potent negative regulator of human hematopoietic progenitors.

Product Info

Amount :	0.1 mg
Purification :	Purified by protein-A affinity chromatography
Storage condition :	Store at 2-8°C. Do not freeze.

Application Note

Flow Cytometry *Recommended dilution:* 1.5 - 2.5 μ g/ml

Positive control: human peripheral blood

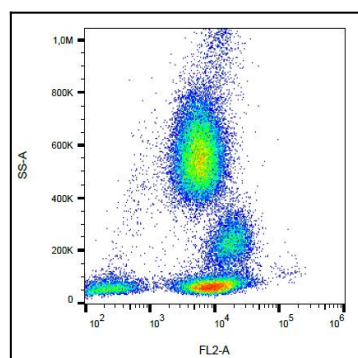


Figure 1: Surface staining of human peripheral blood cells with anti-human CD162 (clone TC2).