

### 30-2284: Anti-CD162 / PSGL-1 Monoclonal Antibody (Clone:TC2)-PE Conjugated

<b>Clonality :</b>	Monoclonal
<b>Clone Name :</b>	TC2
<b>Application :</b>	FACS
<b>Reactivity :</b>	Human
<b>Conjugate :</b>	PE
<b>Gene :</b>	SELPLG
<b>Gene ID :</b>	6404
<b>Uniprot ID :</b>	Q14242
<b>Alternative Name :</b>	SELPLG
<b>Isotype :</b>	Mouse IgG1
<b>Immunogen Information :</b>	Human thymocytes

#### Description

CD162 (P-selectin glycoprotein ligand-1, PSGL-1) is a sialomucin constitutively expressed as a disulfide-linked homodimer of two 120 kDa subunits on the surface of circulating leukocytes. CD162 serves as a ligand for P- E- and L-selectin, with the highest affinity for P-selectin. It is thus involved in leukocyte rolling at the endothelial surfaces, prerequisite for firm leukocyte adhesion and subsequent transendothelial migration. CD162 also mediates leukocyte-platelet adhesion and interleukocyte contacts. Whereas serving as an adhesion molecule on mature leukocytes, CD162 is a potent negative regulator of human hematopoietic progenitors.

#### Product Info

<b>Amount :</b>	100 tests
<b>Storage condition :</b>	Store in the dark at 2-8°C. Do not freeze. Avoid prolonged exposure to light.

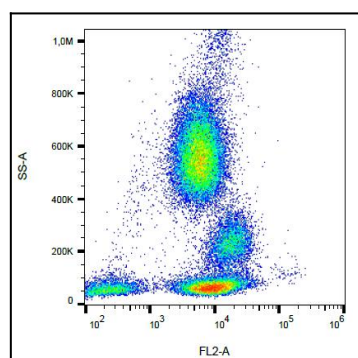


Figure 1: Surface staining of human peripheral blood cells with anti-human CD162 (clone TC2) PE.