

30-2138: Anti-CD165 Monoclonal Antibody (Clone:SN2)-PE Conjugated

Clonality :	Monoclonal
Clone Name :	SN2
Application :	FACS, IP, WB, IHC-Fr, ICC
Reactivity :	Human
Conjugate :	PE
Isotype :	Mouse IgG1
Immunogen Information :	CD165 purified from human Molt-4 cell line

Description

CD165 is a poorly characterized transmembrane protein highly expressed on platelets and many leukemic T cell lines. At lower level it is expressed on a proportion of circulating T cells and monocytes, on thymic epithelium, fibroblasts, epidermal keratinocytes, pancreatic islet cells, and some neurons. It might have a role in adhesion between thymocytes and thymic epithelial cells and it can be used as a marker for tumor progression.

Product Info

Amount :	100 tests
Storage condition :	Store in the dark at 2-8°C. Do not freeze. Avoid prolonged exposure to light.

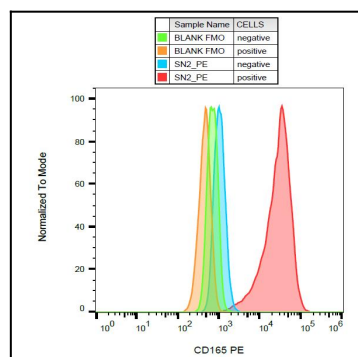


Figure 1: Surface staining of CD165 on JURKAT cells with anti-CD165 (SN2) PE.