

30-2166: Anti-CD18 / Integrin beta2 subunit Monoclonal Antibody (Clone:MEM-48)-PE Conjugated

Clonality :	Monoclonal
Clone Name :	MEM-48
Application :	FACS, IP, WB, IHC, IHC-Fr, Functional Assay
Reactivity :	Human
Conjugate :	PE
Gene :	ITGB2
Gene ID :	3689
Uniprot ID :	P05107
Alternative Name :	ITGB2,CD18,MFI7
Isotype :	Mouse IgG1
Immunogen Information :	Leukocytes of a patient suffering from a LGL-type leukemia.

Description

CD18, integrin beta2 subunit, forms heterodimers with four types of CD11 molecule to constitute leukocyte (beta2) integrins: alphaLbeta2 (CD11a/CD18, LFA-1), alphaMbeta2 (CD11b/CD18, Mac-1, CR3), alphaXbeta2 (CD11c/CD18) and alphaDbeta2 (CD11d/CD18). In most cases, the response mediated by the integrin is a composite of the functions of its individual subunits. These integrins are essential for proper leukocyte migration, mediating intercellular contacts. Absence of CD18 leads to leukocyte adhesion deficiency-1; severe reduction of CD18 expression leads to the development of a psoriasiform skin disease. CD18 is also a target of Mannheimia (Pasteurella) haemolytica leukotoxin and is sufficient to mediate leukotoxin-mediated cytolysis.

Product Info

Amount :	100 tests
Storage condition :	Store in the dark at 2-8°C. Do not freeze. Avoid prolonged exposure to light.

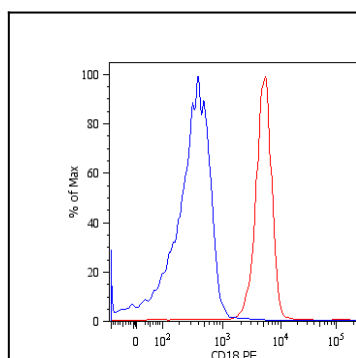


Figure 1: Surface staining of human peripheral blood cells with anti-human CD18 (MEM-48) PE. Cells in the granulocyte gate were used for analysis.