

30-2056: Anti-CD18 / Integrin beta2 subunit Monoclonal Antibody (Clone:M18/2)-FITC Conjugated

Clonality :	Monoclonal
Clone Name :	M18/2
Application :	FACS, IP, WB, IHC, IHC-Fr, Functional Assay
Reactivity :	Mouse
Conjugate :	FITC
Gene :	Itgb2
Gene ID :	16414
Uniprot ID :	P11835
Alternative Name :	Itgb2
Isotype :	Rat IgG2a
Immunogen Information :	Murine cytotoxic T cell glycoproteins

Description

CD18, integrin beta2 subunit, forms heterodimers with four types of CD11 molecule to constitute leukocyte (beta2) integrins: alphaLbeta2 (CD11a/CD18, LFA-1), alphaMbeta2 (CD11b/CD18, Mac-1, CR3), alphaXbeta2 (CD11c/CD18) and alphaDbeta2 (CD11d/CD18). In most cases, the response mediated by the integrin is a composite of the functions of its individual subunits. These integrins are essential for proper leukocyte migration, mediating intercellular contacts.

Product Info

Amount :	0.1 mg
Storage condition :	Store in the dark at 2-8°C. Do not freeze. Avoid prolonged exposure to light.

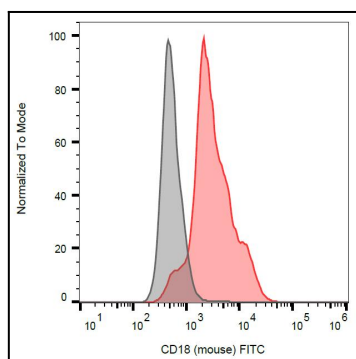


Figure 1: Surface staining of mouse splenocytes using anti-CD18 antibody (clone M18/2) FITC.