

## 30-2431: Anti-CD19 Monoclonal Antibody (Clone:LT19)-PerCP Conjugated

<b>Clonality :</b>	Monoclonal
<b>Clone Name :</b>	LT19
<b>Application :</b>	FACS, IP
<b>Reactivity :</b>	Human
<b>Conjugate :</b>	PerCP
<b>Gene :</b>	CD19
<b>Gene ID :</b>	930
<b>Uniprot ID :</b>	P15391
<b>Alternative Name :</b>	CD19
<b>Isotype :</b>	Mouse IgG1
<b>Immunogen Information :</b>	Daudi human Burkitt lymphoma cell line

### Description

CD19 is a transmembrane glycoprotein of Ig superfamily expressed by B cells from the time of heavy chain rearrangement until plasma cell differentiation. It forms a tetrameric complex with CD21 (complement receptor type 2), CD81 (TAPA-1) and Leu13. Together with BCR (B cell antigen receptor), this complex signals to decrease B cell threshold for activation by the antigen. Besides being signal-amplifying coreceptor for BCR, CD19 can also signal independently of BCR coligation and it turns out to be a central regulatory component upon which multiple signaling pathways converge. Mutation of the CD19 gene results in hypogammaglobulinemia, whereas CD19 overexpression causes B cell hyperactivity.

### Product Info

<b>Amount :</b>	100 tests
<b>Storage condition :</b>	Store in the dark at 2-8°C. Do not freeze. Avoid prolonged exposure to light.

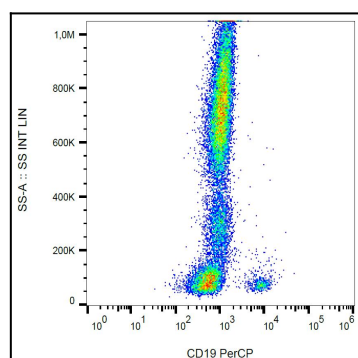


Figure 1: Surface staining of human peripheral blood cells with anti-human CD19 (LT19) PerCP.