

30-2244: Anti-CD2 / LFA-2 Monoclonal Antibody (Clone:LT2)-PE Conjugated

Clonality :	Monoclonal
Clone Name :	LT2
Application :	FACS
Reactivity :	Human
Conjugate :	PE
Gene :	CD2
Gene ID :	914
Uniprot ID :	P06729
Alternative Name :	T-cell surface antigen CD2, Erythrocyte receptor, T-cell surface antigen T11/Leu-5
Isotype :	Mouse IgG2b
Immunogen Information :	Normal human blood lymphocytes.

Description

CD2 belongs to T lymphocyte glycoproteins of immunoglobulin superfamily. Its interaction with CD58 stabilizes adhesion between T cells and antigen presenting or target cells. Relatively low affinity of CD2 to CD58 (as measured in solution) is compensated within the two-dimensional cell-cell interface to provide tight adhesion. Moreover, T cell activation induces increased CD2 expression and its lateral mobility, making easier contact between CD2 and CD58. Subsequently, T cell activation causes fixation of CD58-CD2 at sites of cell-cell contact, thereby strengthening intercellular adhesion. CD2 deficiency reduces intestinal inflammation and helps to control infection.

Product Info

Amount :	100 tests
Storage condition :	Store in the dark at 2-8°C. Do not freeze. Avoid prolonged exposure to light.

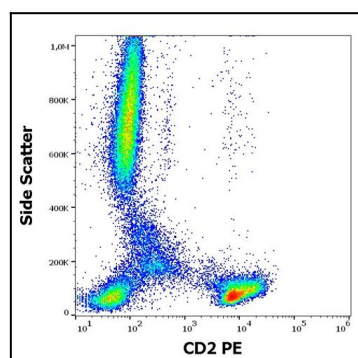


Figure 1: Flow cytometry surface staining pattern of human peripheral whole blood stained using anti-human CD2 (LT2) PE antibody (20 µl reagent / 100 µl of peripheral whole blood).

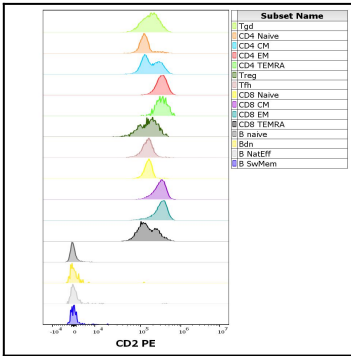


Figure 2: Expression profiling on peripheral blood subsets using Anti-human CD2 PE antibody (clone LT2). Adaptive panel

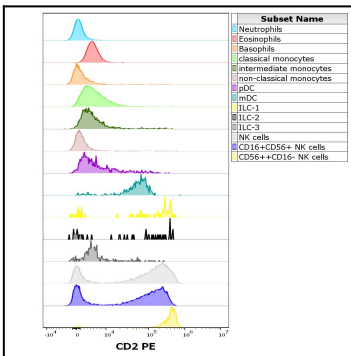


Figure 3: Expression profiling on peripheral blood subsets using Anti-human CD2 PE antibody (clone LT2). Innate panel

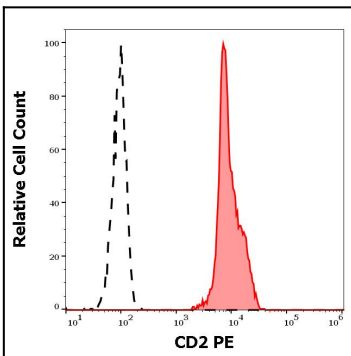


Figure 4: Separation of human CD2 positive lymphocytes (red-filled) from neutrophil granulocytes (black-dashed) in flow cytometry analysis (surface staining) of human peripheral whole blood stained using anti-human CD2 (LT2) PE antibody (20 µl reagent / 100 µl of peripheral whole blood).

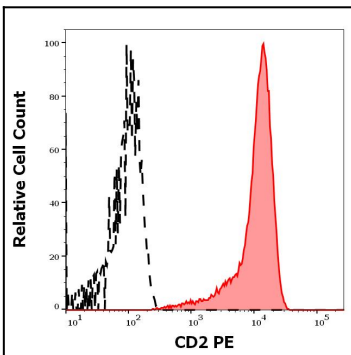


Figure 5: Separation of MOLT-4 cells stained using anti-human CD2 (LT2) PE antibody (concentration in sample 4 µg/ml, red-filled) from MOLT-4 cells stained using mouse IgG1 isotype control (MOPC-21) PE antibody (concentration in sample 4 µg/ml, same as CD2 PE concentration, black-dashed) in flow cytometry analysis (surface staining).