

30-1832: Anti-CD2 / LFA-2 Monoclonal Antibody (Clone:MEM-65)-Biotin Conjugated

Clonality :	Monoclonal
Clone Name :	MEM-65
Application :	FACS, IP
Reactivity :	Human
Conjugate :	Biotin
Gene :	CD2
Gene ID :	914
Uniprot ID :	P06729
Alternative Name :	T-cell surface antigen CD2, Erythrocyte receptor, T-cell surface antigen T11/Leu-5
Isotype :	Mouse IgG1
Immunogen Information :	Human peripheral T cells.

Description

CD2 belongs to T lymphocyte glycoproteins of immunoglobulin superfamily. Its interaction with CD58 stabilizes adhesion between T cells and antigen presenting or target cells. Relatively low affinity of CD2 to CD58 (as measured in solution) is compensated within the two-dimensional cell-cell interface to provide tight adhesion. Moreover, T cell activation induces increased CD2 expression and its lateral mobility, making easier contact between CD2 and CD58. Subsequently, T cell activation causes fixation of CD58-CD2 at sites of cell-cell contact, thereby strengthening intercellular adhesion. CD2 deficiency reduces intestinal inflammation and helps to control infection.

Product Info

Amount :	0.1 mg
Storage condition :	Store at 2-8°C. Do not freeze.

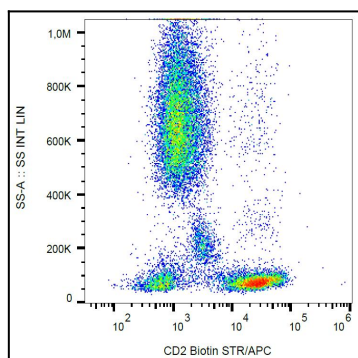


Figure 1: Surface staining of human peripheral blood with anti-human CD2 (MEM-65) biotin, streptavidin-APC.