

30-2366: Anti-CD2 Monoclonal Antibody (Clone:TS1/8)-PE Conjugated

Clonality :	Monoclonal
Clone Name :	TS1/8
Application :	FACS, Functional Assay
Reactivity :	Human
Conjugate :	PE
Gene :	CD2
Gene ID :	914
Uniprot ID :	P06729
Alternative Name :	T-cell surface antigen CD2, Erythrocyte receptor, T-cell surface antigen T11/Leu-5
Isotype :	Mouse IgG1
Immunogen Information :	Cytotoxic T lymphocytes

Description

CD2 (also known as LFA-2) belongs to T lymphocyte glycoproteins of immunoglobulin superfamily. Its interaction with CD58 stabilizes adhesion between T cells and antigen presenting or target cells. Relatively low affinity of CD2 to CD58 (as measured in solution) is compensated within the two-dimensional cell-cell interface to provide tight adhesion. Moreover, T cell activation induces increased CD2 expression and its lateral mobility, making easier contact between CD2 and CD58. Subsequently, T cell activation causes fixation of CD58-CD2 at sites of cell-cell contact, thereby strengthening intercellular adhesion. CD2 deficiency reduces intestinal inflammation and helps to control infection.

Product Info

Amount :	100 tests
Storage condition :	Store in the dark at 2-8°C. Do not freeze. Avoid prolonged exposure to light.

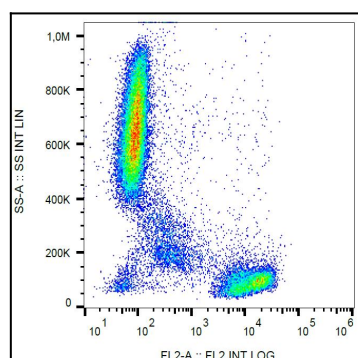


Figure 1: Surface staining of CD2 in human peripheral blood with anti-CD2 (TS1/8) PE.