

30-1728: Anti-CD20 Monoclonal Antibody (Clone:LT20)-APC Conjugated

Clonality :	Monoclonal
Clone Name :	LT20
Application :	FACS
Reactivity :	Human
Conjugate :	APC
Gene :	MS4A1
Gene ID :	931
Uniprot ID :	P11836
Alternative Name :	MS4A1,CD20
Isotype :	Mouse IgG2a
Immunogen Information :	Normal human lymphocytes from lymph node.

Description

CD20 is a cell surface 33-37 (depending on the degree of phosphorylation) kDa non-glycosylated surface phosphoprotein expressed on mature and most malignant B cells, but not stem cells or plasma cells (low number of the CD20 has been also detected on a subpopulation of T lymphocytes and it can be expressed on follicular dendritic cells). Its expression on B cells is synchronous with the expression of surface IgM. CD20 regulates transmembrane calcium conductance (probably functioning as a component of store-operated calcium channel), cell cycle progression and B-cell proliferation. It is associated with lipid rafts, but the intensity of this association depends on extracellular triggering, employing CD20 conformational change and/or BCR (B cell antigen receptor) aggregation. After the receptor ligation, BCR and CD20 colocalize and then rapidly dissociate before BCR endocytosis, whereas CD20 remains at the cell surface. CD20 serves as a useful target for antibody-mediated therapeutic depletion of B cells, as it is expressed at high levels on most B-cell malignancies, but does not become internalized or shed from the plasma membrane following mAb treatment.

Product Info

Amount :	100 tests
Storage condition :	Store in the dark at 2-8°C. Do not freeze. Avoid prolonged exposure to light.

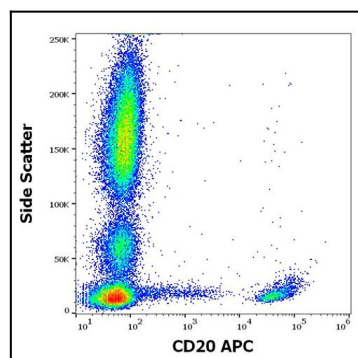


Figure 1: Flow cytometry surface staining pattern of human peripheral whole blood stained using anti-human CD20 (LT20) APC antibody (10 µl reagent / 100 µl of peripheral whole blood).

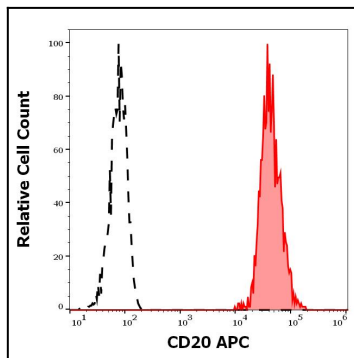


Figure 2: Separation of human CD20 positive lymphocytes (red-filled) from neutrophil granulocytes (black-dashed) in flow cytometry analysis (surface staining) of human peripheral whole blood stained using anti-human CD20 (LT20) APC antibody (10 µl reagent / 100 µl of peripheral whole blood).