

30-2321: Anti-CD205 Monoclonal Antibody (Clone:HD30)-PE Conjugated

Clonality :	Monoclonal
Clone Name :	HD30
Application :	FACS, WB, IHC-Fr
Reactivity :	Human
Conjugate :	PE
Gene :	LY75
Gene ID :	4065
Uniprot ID :	O60449
Alternative Name :	LY75, CD205, CLEC13B
Isotype :	Mouse IgG1
Immunogen Information :	Recombinant Fc-tagged human CD205

Description

CD205, also known as DEC-205, is an endocytic receptor of macrophage mannose receptor family. This 205 kDa C-type lectin transmembrane protein mediates adsorptive uptake and its intracellular domain contains coated pit localization sequence and distal acidic motif, which is required for recycling beyond early endosomes through deeper MHC II+ late endosomes and lysosomes. This unique pathway of receptor-mediated uptake proves to be necessary for presentation of antigenic peptides at low doses of ligand. CD205 is responsible for uptake and processing of captured antigens for dendritic cells.

Product Info

Amount :	100 tests
Storage condition :	Store in the dark at 2-8°C. Do not freeze. Avoid prolonged exposure to light.

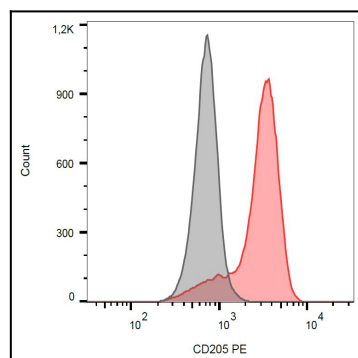


Figure 1: Surface staining of human peripheral blood monocytes with anti-CD205 (HD30) PE.