

30-1979: Anti-CD21 Monoclonal Antibody (Clone:LT21)-FITC Conjugated

Clonality :	Monoclonal
Clone Name :	LT21
Application :	FACS
Reactivity :	Human
Conjugate :	FITC
Gene :	CR2
Gene ID :	1380
Uniprot ID :	P20023
Alternative Name :	CR2,C3DR
Isotype :	Mouse IgG1 kappa
Immunogen Information :	IM9 human B-lymphoblastoid cell line

Description

CD21 (complement receptor 2, CR2) binds C3 complement fragments, especially its breakdown fragments, which remain covalently attached to complement activating surfaces or antigen. CD21 has important roles in uptake and retention of immunocomplexes, survival of memory B cells and in development and maintenance of the humoral response to T-dependent antigens. CD21 also serves as a key receptor for Epstein-Barr virus binding and is involved in targeting prions to follicular dendritic cells and expediting neuroinvasion following peripheral exposure to prions. A soluble form of the CD21 (sCD21) is shed from the lymphocyte surface and retains its ability to bind respective ligands.

Product Info

Amount :	100 tests
Storage condition :	Store in the dark at 2-8°C. Do not freeze. Avoid prolonged exposure to light.

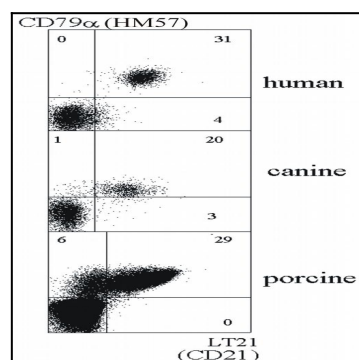


Figure 1: Double staining of human, canine and porcine B lymphocytes with anti-CD79a (HM57) and anti-CD21 (LT21) antibody.