

## 36-1549: Monoclonal Antibody to CD31 / PECAM-1 (Endothelial Cell Marker)(Clone : SPM122)-PE

<b>Clonality :</b>	Monoclonal
<b>Clone Name :</b>	SPM122
<b>Application :</b>	FACS
<b>Reactivity :</b>	Human
<b>Conjugate :</b>	PE
<b>Gene :</b>	PECAM1
<b>Gene ID :</b>	5175
<b>Uniprot ID :</b>	P16284
<b>Format :</b>	Purified
<b>Alternative Name :</b>	PECAM1
<b>Isotype :</b>	Mouse IgG1, kappa
<b>Immunogen Information :</b>	Membrane preparation of a spleen from a patient with hairy cell leukemia

### Description

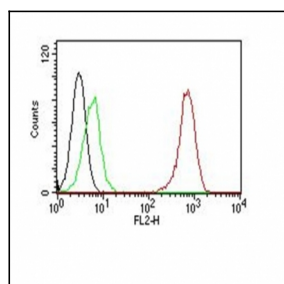
CD31 (PECAM-1) is a transmembrane glycoprotein member of the immunoglobulin supergene family of adhesion molecules. CD31 is expressed by stem cells of the hematopoietic system and is primarily used to identify and concentrate these cells for experimental studies as well as for bone marrow transplantation. Anti-CD31 has shown to be highly specific and sensitive for vascular endothelial cells. Staining of nonvascular tumors (excluding hematopoietic neoplasms) is rare. CD31 MAb reacts with normal, benign, and malignant endothelial cells which make up blood vessel lining. The level of CD31 expression can help to determine the degree of tumor angiogenesis, and a high level of CD31 expression may imply a rapidly growing tumor and potentially a predictor of tumor recurrence.

### Product Info

<b>Amount :</b>	0.5 ml
<b>Purification :</b>	Affinity Chromatography
<b>Content :</b>	PE conjugated CD31 / PECAM-1 Prepared in 10mM PBS with 0.05% BSA and 0.05% azide.
<b>Storage condition :</b>	Store the antibody at 4°C; stable for 6 months.

### Application Note

Flow Cytometry: 5ul per test per one million cellsImmunofluorescence (1:50-1:100)



Flow Cytometry of human CD31 on Jurkat Cells. Black: Cells alone; Green: Isotype Control; Red: PE-labeled CD31 Monoclonal Antibody (SPM122).