

30-1675: Anti-CD22 Monoclonal Antibody (Clone:S-HCL-1)-APC Conjugated(Discontinued)

Clonality :	Monoclonal
Clone Name :	S-HCL-1
Application :	FACS
Reactivity :	Human
Conjugate :	APC
Gene :	CD22
Gene ID :	933
Uniprot ID :	P20273
Alternative Name :	CD22,SIGLEC2
Isotype :	Mouse IgG2b
Immunogen Information :	Whole hairy cell leukemia cells and membrane preparation

Description

CD22, also known as Siglec-2 (sialic acid-binding immunoglobulin-like lectin-2) is a transmembrane glycoprotein binding alpha2,6-linked sialic acid-bearing ligands. Intracellular domain of CD22 recruits protein tyrosine phosphatase SHP-1 through the immunoreceptor tyrosine-based inhibitory motifs (ITIMs), thus setting a threshold for B cell receptor-mediated activation. CD22 also regulates B-cell response by involvement in controlling the CD19/CD21-Src-family protein tyrosine kinase amplification pathway and CD40 signaling. CD22 exhibits hallmarks of clathrin-mediated endocytic pathway.

Product Info

Amount :	100 tests
Storage condition :	Store in the dark at 2-8°C. Do not freeze. Avoid prolonged exposure to light.

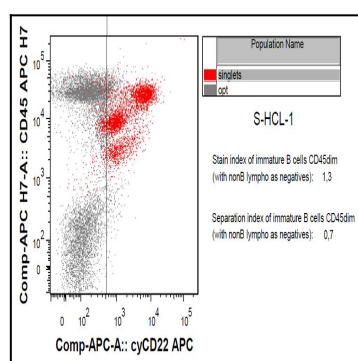


Figure 1: Intracellular staining of CD22 in human immature B cells with anti-CD22 (S-HCL-1) APC.