

### 30-2144: Anti-CD22 Monoclonal Antibody (Clone:S-HCL-1)-PE Conjugated(Discontinued)

<b>Clonality :</b>	Monoclonal
<b>Clone Name :</b>	S-HCL-1
<b>Application :</b>	FACS
<b>Reactivity :</b>	Human
<b>Conjugate :</b>	PE
<b>Gene :</b>	CD22
<b>Gene ID :</b>	933
<b>Uniprot ID :</b>	P20273
<b>Alternative Name :</b>	CD22,SIGLEC2
<b>Isotype :</b>	Mouse IgG2b
<b>Immunogen Information :</b>	Whole hairy cell leukemia cells and membrane preparation

#### Description

CD22, also known as Siglec-2 (sialic acid-binding immunoglobulin-like lectin-2) is a transmembrane glycoprotein binding alpha2,6-linked sialic acid-bearing ligands. Intracellular domain of CD22 recruits protein tyrosine phosphatase SHP-1 through the immunoreceptor tyrosine-based inhibitory motifs (ITIMs), thus setting a threshold for B cell receptor-mediated activation. CD22 also regulates B-cell response by involvement in controlling the CD19/CD21-Src-family protein tyrosine kinase amplification pathway and CD40 signaling. CD22 exhibits hallmarks of clathrin-mediated endocytic pathway.

#### Product Info

<b>Amount :</b>	100 tests
<b>Storage condition :</b>	Store in the dark at 2-8°C. Do not freeze. Avoid prolonged exposure to light.

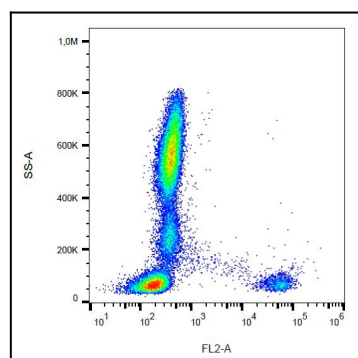


Figure 1: Surface staining of CD22 in human peripheral blood with anti-CD22 (S-HCL-1) PE.