

### 30-2186: Anti-CD22 Monoclonal Antibody (Clone:MEM-01)-PE Conjugated

Clonality :	Monoclonal
Clone Name :	MEM-01
Application :	FACS, IP, WB
Reactivity :	Human, Non-Human Primates
Conjugate :	PE
Gene :	CD22
Gene ID :	933
Uniprot ID :	P20273
Alternative Name :	CD22,SIGLEC2
Isotype :	Mouse IgG1
Immunogen Information :	Raji Burkitt's lymphoma cell line

#### Description

CD22, also known as Siglec-2 (sialic acid-binding immunoglobulin-like lectin-2) is a transmembrane glycoprotein binding alpha2,6-linked sialic acid-bearing ligands. Intracellular domain of CD22 recruits protein tyrosine phosphatase SHP-1 through the immunoreceptor tyrosine-based inhibitory motifs (ITIMs), thus setting a threshold for B cell receptor-mediated activation. CD22 also regulates B-cell response by involvement in controlling the CD19/CD21-Src-family protein tyrosine kinase amplification pathway and CD40 signaling. CD22 exhibits hallmarks of clathrin-mediated endocytic pathway.

#### Product Info

Amount :	100 tests
Storage condition :	Store in the dark at 2-8°C. Do not freeze. Avoid prolonged exposure to light.

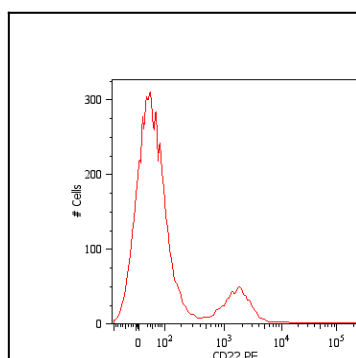


Figure 1: Surface staining of human peripheral blood cells with anti-CD22 (MEM-01) PE. Cells in the lymphocyte gate were used for analysis.