

30-1983: Anti-CD222 / IGF2 receptor / CIMPR Monoclonal Antibody (Clone:MEM-238)-FITC Conjugated

Clonality :	Monoclonal
Clone Name :	MEM-238
Application :	FACS, IP, WB
Reactivity :	Human, Non-Human Primates
Conjugate :	FITC
Gene :	IGF2R
Gene ID :	3482
Uniprot ID :	P11717
Alternative Name :	IGF2R,MPRI
Isotype :	Mouse IgG1
Immunogen Information :	Recombinant <i>Vaccinia</i> virus encoding CD222.

Description

CD222 (CIMPR, cation-independent mannose 6-phosphate receptor; IGF2 receptor) is a ubiquitously expressed 250 kDa transmembrane protein. No more than 10% of CD222 is present on the cell surface where it serves as a multifunctional receptor. Intracellular (major) fraction of CD222 is involved in transport of newly synthesized lysosomal enzymes modified by mannose 6-phosphate from Golgi apparatus to lysosomes. The cell surface CD222 binds and internalizes exogenous mannose 6-phosphate-containing ligands. Importantly, CD222 is crucial for internalization and degradation of insulin-like growth factor 2, thus controlling cell growth. CD222 also complexes CD87 (urokinase-type plasminogen-activator receptor), plasminogen and latent TGF-beta, last but not least CD222 serves as a receptor for heparanase and even for *Listeria*.

Product Info

Amount :	100 tests
Storage condition :	Store in the dark at 2-8°C. Do not freeze. Avoid prolonged exposure to light.

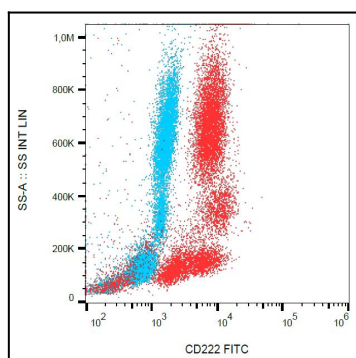


Figure 1: Surface staining of human peripheral blood with anti-CD222 (MEM-238) FITC.