

30-2108: Anti-CD235a / Glycophorin A Monoclonal Antibody (Clone:JC159)-FITC Conjugated

Clonality :	Monoclonal
Clone Name :	JC159
Application :	FACS, IHC, IHC-Fr
Reactivity :	Human, Rat
Conjugate :	FITC
Gene :	GYPA
Gene ID :	2993
Uniprot ID :	P02724
Alternative Name :	GYPA,GPA
Isotype :	Mouse IgG1
Immunogen Information :	Membrane preparation from splenic hairy cell leukemia

Description

CD235a (Glycophorin A, GPA) is a transmembrane sialoglycoprotein expressed on erythrocytes and their precursors. Similarly to glycophorin B (GPB), these molecules provide the cells with a large mucin-like surface, which minimalizes aggregation between erythrocytes in the circulation. GPA is the carrier of blood group M and N specificities, while GPB accounts for S, s and U specificities. CD235a is a receptor of Hsa, an Streptococcus adhesin.

Product Info

Amount :	100 tests
Storage condition :	Store in the dark at 2-8°C. Do not freeze. Avoid prolonged exposure to light.

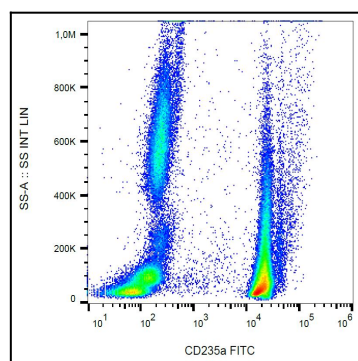


Figure 1: Surface staining of CD235a in human peripheral blood (erythrocytes and leukocytes) with anti-CD235a (JC159) FITC.