

30-1123: Anti-CD25 / IL-2R alpha chain Monoclonal Antibody (Clone:MEM-181)

Clonality :	Monoclonal
Clone Name :	MEM-181
Application :	FACS
Reactivity :	Human
Gene :	IL2RA
Gene ID :	3559
Uniprot ID :	P01589
Format :	Purified
Alternative Name :	IL2RA
Isotype :	Mouse IgG1
Immunogen Information :	PHA-activated peripheral blood leucocytes

Description

Specificity: The antibody MEM-181 reacts with an extracellular epitope of CD25 (Interleukin-2 receptor alpha chain), a 55 kDa type I transmembrane glycoprotein expressed on activated B and T lymphocytes, activated monocytes/macrophages and on CD4+ T lymphocytes (T regulatory cells); it is lost on resting B and T lymphocytes.

Description: CD25 (IL2Ralpha, Tac) is a ligand-binding alpha subunit of interleukin 2 receptor (IL2R). Together with beta and gamma subunit CD25 constitutes the high affinity IL2R, whereas CD25 alone serves as the low affinity IL2R. CD25 expression rapidly increases upon T cell activation. The 55 kDa CD25 molecule is enzymatically cleaved and shed from the cell surface as a soluble 45 kDa s-Tac, whose concentration in serum can be used as a marker of T cell activation. Expression of CD25 indicates the neoplastic phenotype of mast cells. Humanized anti CD25 antibodies represent a useful tool to reduce the incidence of allograft rejection as well as the severity of graft versus host reaction, and radioimmunoconjugates of anti-CD25 antibodies can be used against CD25 expressing lymphomas.

Product Info

Amount :	0.1 mg
Purification :	Purified by protein-A affinity chromatography
Content :	Concentration: 1 mg/ml Formulation : Phosphate buffered saline (PBS), pH 7.4, 15 mM sodium azide
Storage condition :	Store at 2-8°C. Do not freeze.

Application Note

Flow cytometry: Recommended dilution: 1-5 µg/ml.

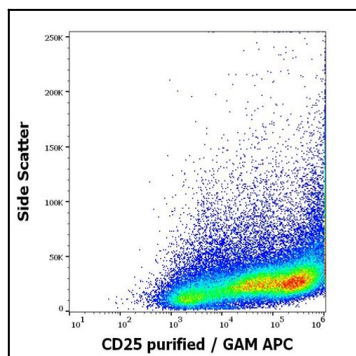


Fig1: Flow cytometry surface staining pattern of human PHA stimulated peripheral blood mononuclear cells stained using anti-human CD25 (MEM-181) purified antibody (concentration in sample 2 µg/ml) GAM APC.

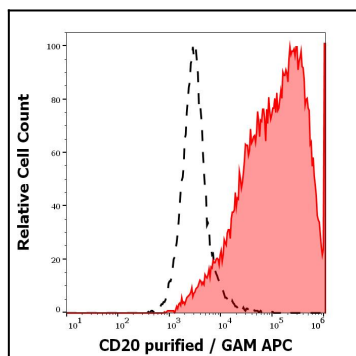


Fig 2: Separation of human PHA stimulated peripheral blood mononuclear cells stained using anti-human CD25 (MEM-181) purified antibody (concentration in sample 2 µg/ml, GAM APC, red-filled) from human PHA stimulated peripheral blood mononuclear cells unstained by primary antibody (GAM APC, black-dashed) in flow cytometry analysis (surface staining).