

## 30-2053: Anti-CD25 / IL-2R alpha chain Monoclonal Antibody (Clone:PC61.5)-FITC Conjugated(Discontinued)

<b>Clonality :</b>	Monoclonal
<b>Clone Name :</b>	PC61.5
<b>Application :</b>	FACS, IP, IHC-Fr, Functional Assay
<b>Reactivity :</b>	Mouse
<b>Conjugate :</b>	FITC
<b>Gene :</b>	Il2ra
<b>Gene ID :</b>	16184
<b>Uniprot ID :</b>	P01590
<b>Alternative Name :</b>	Il2ra,Il2r
<b>Isotype :</b>	Rat IgG1
<b>Immunogen Information :</b>	B6.1 CTL cell line

### Description

CD25 (IL2Ralpha, Tac) is a ligand-binding alpha subunit of interleukin 2 receptor (IL2R). Together with beta and gamma subunit CD25 constitutes the high affinity IL2R, whereas CD25 alone serves as the low affinity IL2R. CD25 expression rapidly increases upon T cell activation. The 55 kDa CD25 molecule is enzymatically cleaved and shed from the cell surface as a soluble 45 kDa s-Tac, whose concentration in serum can be used as a marker of T cell activation. Expression of CD25 indicates the neoplastic phenotype of mast cells. CD25+ CD4+ FoxP3+ regulatory cells (Treg cells) play a crucial role in the control of organ-specific autoimmune diseases.

### Product Info

<b>Amount :</b>	0.1 mg
<b>Storage condition :</b>	Store in the dark at 2-8°C. Do not freeze. Avoid prolonged exposure to light.

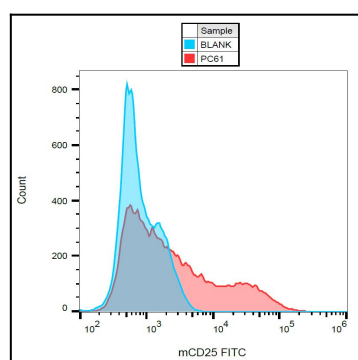


Figure 1: Surface staining of CD25 in PHA activated (3 days) murine splenocytes using anti-CD25 (PC61.5) FITC.